

# UNIVERSAL LABORATORY MILL ULD



# UNIVERSAL LABORATORY MILL ULD

## Overview

The versatile Universal Laboratory Mill from Bauermeister allows maximum grinding flexibility from coarse to ultra-fine particle size reduction. The size of the ULD allows for accurate testing before large scale production runs and actual production runs for products requiring below 50 lbs/hr, such as cosmetics, pharmaceuticals and personal care products. With interchangeable grinding elements, the Universal Mill is suitable for the vast majority of soft to medium-hard material grinding applications.

## Key Features

- Grinding ability to the 325 mesh (44 micron) range and below.
- Self contained grinding plant including feeder, mill, filter, collection and controls.
- Constructed of stainless steel.
- Cryogenic grinding.

## Technical Data

- Connected load: 1.1 kW
- Rotor Diameter: 5 inches
- Speed: up to approx 18,000 rpm

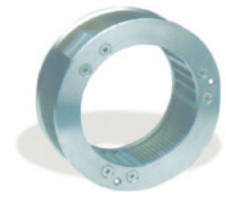
## Typical Applications

- |                    |                   |
|--------------------|-------------------|
| • Borax            | • Pharmaceuticals |
| • Cosmetics        | • Pigments        |
| • Dextrose         | • Plastic         |
| • Fertilizers      | • Resins          |
| • Flours           | • Soy Protein     |
| • Gelatin          | • Spices          |
| • Gypsum           | • Starch          |
| • Herbs/Vegetables | • Sugar           |
| • Kaolin           | • Talc            |
| • Lactose          |                   |

## Optional Grinding Elements



**Sieve Ring Assembly**  
With Ring Sieve.



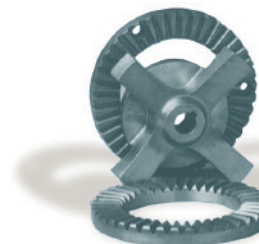
**Jaw Assembly**  
With 3 Grinding Jaws and  
3 Sieve Plates.



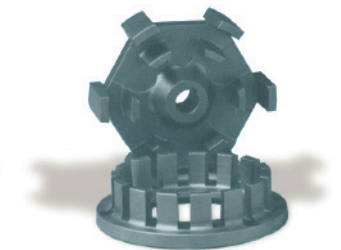
**Turbo Rotor**  
For efficient grinding to a  
high degree of fineness.



**Pin Rotor**  
For fine grinding of  
materials with high fat  
content.



**Cross Beater Rotor**  
For coarse to medium-fine  
grinding.



**Pinned Disc Rotor**  
For coarse grinding of  
materials with hard or  
large particles.

## Bauermeister

6060 Primacy Parkway | Suite 251 | Memphis, TN 38119 | USA

**P** +1 901 363 0921 **F** +1 901 794 9679

info.hdm-usa@h-d-m.com | www.BauermeisterUSA.com

